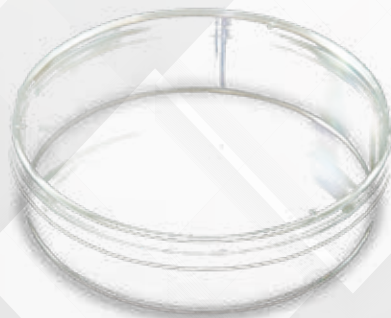


## Advantages of Kord-Valmark<sup>TM</sup> Petri Dishes

- **Optically clear:** top and bottom surfaces offer unhindered view
- **Product traceability:** SKU, lot and case number provided on each box
- **Radiation sterilized:** contents sterile if sleeve is unopened
- **Raw Material:** molded from medical-grade virgin polystyrene
- **Consistent flatness:** allows for even media distribution
- **Three rim configurations:** stackable, slippable and no rim dishes available based on application and need
- **Optimized for automation:** side arrows and ISO Mark Target options
- **Reduced condensation:** ventilation ribs allow for free air circulation
- **Ease of use:** flared lid skirt and squared corners for easy one-hand operation, especially with gloves



## Polystyrene Stackable Petri Dishes

For General Use

Product Number	Size (mm)	Style	Rim Feature	Unique Feature	Iso Mark Target	Dishes/Sleeve	Sleeves/Case	Dishes/Case
1000	65 x 15	Contact Plate	Slippable	Convex Bottom	No	25	20	500
2900	100 x 15	Mono	Stackable	Industry Standard	No	25	20	500
2901	60 x 15	Mono	Stackable	Media Saver	No	20	25	500
2903	100 x 15	Bi	Stackable	Two Compartments	No	25	20	500
2906	100 x 25	Mono	Stackable	Extra Deep Dish	No	17	20	340
2912	100 x 15	Tri	Stackable	Three Compartments	No	25	20	500
2913	100 x 15	Quad	Stackable	Four Compartments	No	25	20	500

### Case Dimensions

Product Number	Dishes/Case	Case/Pallet	L	W	H	Case Cubic	Case Weight
1000	500	63	15.00 in	12.00 in	13.00 in	1.35 ft <sup>3</sup>	12.30 lbs
			38.10 cm	30.48 cm	33.02 cm	0.04 m <sup>3</sup>	5.58 kg
2900	500	30	19.25 in	15.50 in	16.00 in	2.76 ft <sup>3</sup>	20.86 lbs
			48.90 cm	39.37 cm	40.64 cm	0.08 m <sup>3</sup>	9.46 kgs
2901	500	72	12.25 in	12.50 in	12.50 in	1.11 ft <sup>3</sup>	8.50 lbs
			31.12 cm	31.12 cm	31.75 cm	0.03 m <sup>3</sup>	3.86 kgs
2903	500	30	19.25 in	15.50 in	16.00 in	2.76 ft <sup>3</sup>	22.61 lbs
			48.90 cm	39.37 cm	40.64 cm	0.08 m <sup>3</sup>	10.26 kgs
2906	340	30	19.25 in	16.00 in	17.50 in	3.16 ft <sup>3</sup>	17.11 lbs
			48.90 cm	40.64 cm	44.45 cm	0.09 m <sup>3</sup>	7.76 kgs
2912	500	30	19.25 in	15.50 in	16.00 in	2.76 ft <sup>3</sup>	23.34 lbs
			48.90 cm	39.37 cm	40.64 cm	0.08 m <sup>3</sup>	10.59 kgs
2913	500	30	19.25 in	15.50 in	16.00 in	2.76 ft <sup>3</sup>	22.60 lbs
			48.90 cm	39.37 cm	40.64 cm	0.08 m <sup>3</sup>	10.25 kgs



2900



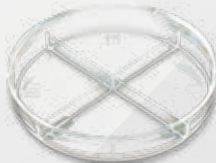
2903



2906



2912



2913

## Polystyrene Slippable Petri Dishes

Product #	Size (mm)	Style	Rim Feature	Unique Feature	Iso Mark Target	Dishes/Sleeve	Sleeves/Case	Dishes/Case
2904	100 x 10	Mono	Slippable	Space Saver	No	30	25	750
2905	100 x 20	Mono	Slippable	Deep Dish, 20mm	Yes	20	20	400
2909	100 x 25	Mono	Slippable	Extra Deep for Seed Germination Tests	No	17	20	340
2910	100 x 15	Mono	Slippable	The Industry Standard	Yes	25	20	500
2910P	100 x 15	Mono	Slippable	The Industry Standard	Yes	25	20	500
2911	100 x 15	Bi	Slippable	Two Compartments	Yes	25	20	500
2914	95 x 15	Mono	Slippable	Media Saver	No	25	20	500
2916	60 x 15	Mono	Slippable	Media Saver	No	20	25	500
2917	100 x 15	Mono	Slippable	Clear Viewing Surfaces	No	25	20	500
2950	85 x 13	Mono	Fully Stackable/Slippable	New 85 x 13 Ultra Plate	Yes	30	20	600
3012	100x15	Tri	Slippable	Three Compartments	Yes	25	20	500
3013	100x15	Quad	Slippable	Four Compartments	Yes	25	20	500
3044	100x10	Mono	Slippable	Space Saver	Yes	30	25	750

### Case Dimensions

Product #	Dishes/Case	Case/Pallet	L	W	H	Case Cubic	Case Weight
2904	750	24	20.13 in	20.00 in	14.13 in	3.29 ft³	29.44 lbs
			51.13 cm	50.80 cm	35.89 cm	0.09 m³	13.35 kgs
2905	400	30	19.25 in	16.00 in	17.50 in	3.16 ft³	18.5 lbs
			48.90 cm	40.64 cm	44.45 cm	0.09 m³	8.41 kgs
2909	340	30	19.25 in	16.00 in	17.50 in	3.16 ft³	17.25 lbs
			48.90 cm	40.64 cm	44.45 cm	0.09 m³	7.82 kgs
2910	500	30	19.25 in	15.50 in	16.00 in	2.76 ft³	20.19 lbs
			48.90 cm	39.37 cm	40.64 cm	0.08 m³	9.16 kgs
2910P	500	30	19.25 in	15.50 in	16.00 in	2.76 ft³	20.19 lbs
			48.90 cm	39.37 cm	40.64 cm	0.08 m³	9.16 kgs
2911	500	30	19.25 in	15.50 in	16.00 in	2.76 ft³	22.85 lbs
			48.90 cm	39.37 cm	40.64 cm	0.08 m³	10.36 kgs
2914	500	30	18.70 in	15.00 in	14.00 in	2.27 ft³	19.65 lbs
			47.50 cm	38.10 cm	40.64 cm	0.06 m³	8.91 kgs
2916	500	72	12.25 in	12.50 in	12.50 in	1.11 ft³	9.22 lbs
			31.12 cm	31.75 cm	31.75 cm	0.03 m³	4.18 kgs
2917	500	30	19.25 in	15.50 in	16.00 in	2.76 ft³	20.63 lbs
			48.90 cm	39.37 cm	40.64 cm	0.08 m³	9.35 kgs
2950	600	30	19.25 in	15.50 in	16.00 in	2.76 ft³	23.89 lbs
			48.90 cm	39.37 cm	40.64 cm	0.08 m³	8.41 kgs
3012	500	30	19.25 in	15.50 in	16.00 in	3.76 ft³	23.34 lbs
			48.90 cm	39.37 cm	40.64 cm	0.08 m³	10.59 kgs
3013	500	30	19.25 in	15.50 in	16.00 in	2.76 ft³	22.60 lbs
			48.90 cm	39.37 cm	40.64 cm	0.08 m³	10.25 kgs
3044	750	24	20.13 in	20.00 in	14.13 in	3.29 ft³	29.44 lbs
			51.13 cm	50.80 cm	35.89 cm	0.09 m³	13.35 kgs



2904



2910



2911



2916

## Polystyrene Automation (No Rim) Petri Dishes

Product #	Size (mm)	Style	Rim Feature	Unique Feature	Iso Mark Target	Dishes/Sleeve	Sleeves/Case	Dishes/Case
2902	150 x 15	Mono	No Rim	Concentric Bottom Ring	No	10	10	100
2920	100 x 15	Mono	No Rim	Automated Lid	No	25	20	500
4004	100 x 10	Mono	No Rim	Space Saver	No	30	25	750
4005	100 x 20	Mono	No Rim	Deep Dish	Yes	20	20	400
4006	100 x 25	Mono	No Rim	Extra Deep Dish	No	17	20	340
4010	100 x 15	Mono	No Rim	The Industry Standard Base	Yes	25	20	500
4011	100 x 15	Bi	No Rim	Two Compartments	Yes	25	20	500
4012	100 x 15	Tri	No Rim	Three Compartments	Yes	25	20	500
4013	100 x 15	Quad	No Rim	Four Compartments	Yes	25	20	500



2902



4006



4011



4013

### Case Dimensions

Product #	Dishes/Case	Case/Pallet	L	W	H	Case Cubic	Case Weight
2902	100	40	16.75 in	12.50 in	15.00 in	1.82 ft <sup>3</sup>	12.75 lbs
			42.55 cm	31.75 cm	38.10 cm	0.05 m <sup>3</sup>	5.78 kgs
2920	500	30	19.25 in	15.50 in	16.00 in	2.76 ft <sup>3</sup>	20.63 lbs
			48.90 cm	39.37 cm	40.64 cm	0.08 m <sup>3</sup>	9.51 kgs
4004	750	24	20.13 in	20.00 in	14.13 in	3.29 ft <sup>3</sup>	29.44 lbs
			51.13 cm	50.08 cm	35.89 cm	0.09 m <sup>3</sup>	13.35 kgs
4005	400	30	19.25 in	16.00 in	17.50 in	3.16 ft <sup>3</sup>	18.5 lbs
			48.90 cm	40.64 cm	44.45 cm	0.09 m <sup>3</sup>	8.41 kgs
4006	340	30	19.25 in	16.00 in	17.50 in	3.16 ft <sup>3</sup>	17.11 lbs
			48.90 cm	40.64 cm	44.45 cm	0.09 m <sup>3</sup>	7.76 kgs
4010	500	30	19.25 in	15.50 in	16.00 in	2.76 ft <sup>3</sup>	20.19 lbs
			48.90 cm	39.37 cm	40.64 cm	0.08 m <sup>3</sup>	9.16 kgs
4011	500	30	19.25 in	15.50 in	16.00 in	2.76 ft <sup>3</sup>	22.85 lbs
			48.90 cm	39.37 cm	40.64 cm	0.08 m <sup>3</sup>	10.36 kgs
4012	500	30	19.25 in	15.50 in	16.00 in	2.76 ft <sup>3</sup>	23.34 lbs
			48.90 cm	39.37 cm	40.64 cm	0.08 m <sup>3</sup>	10.59 kgs
4013	500	30	19.25 in	15.50 in	16.00 in	2.76 ft <sup>3</sup>	22.60 lbs
			48.90 cm	39.37 cm	40.64 cm	0.08 m <sup>3</sup>	10.25 kgs